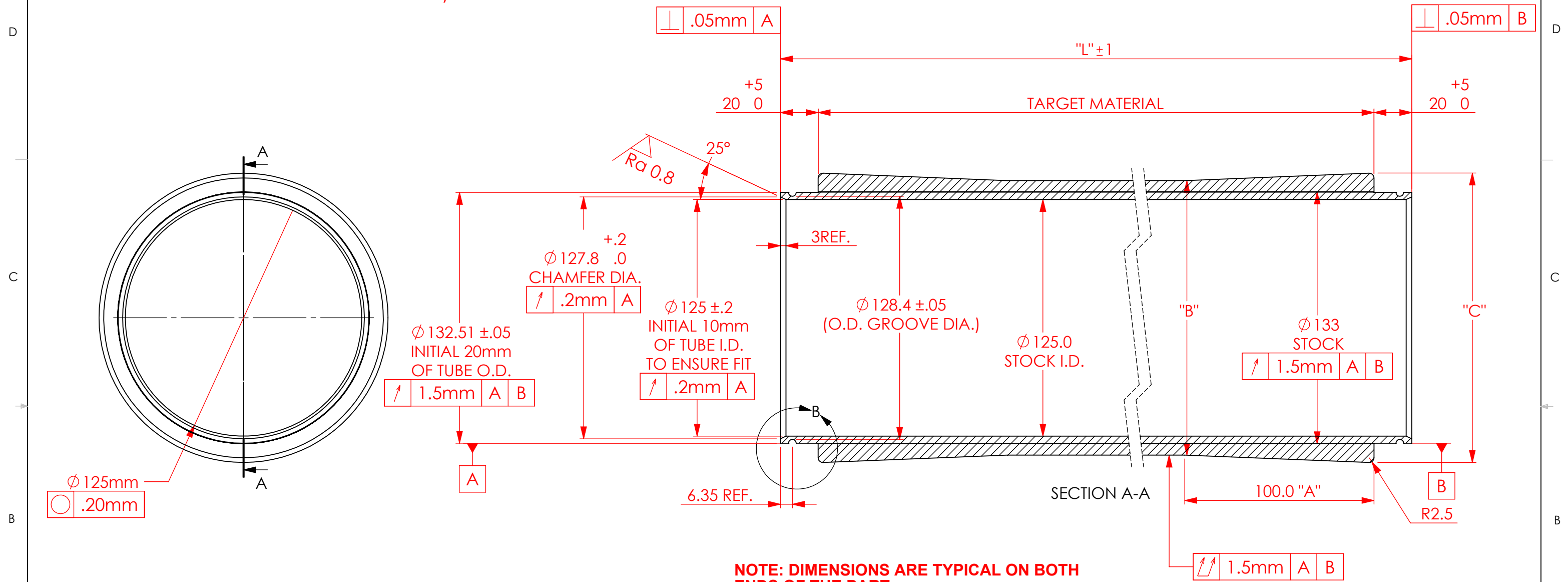


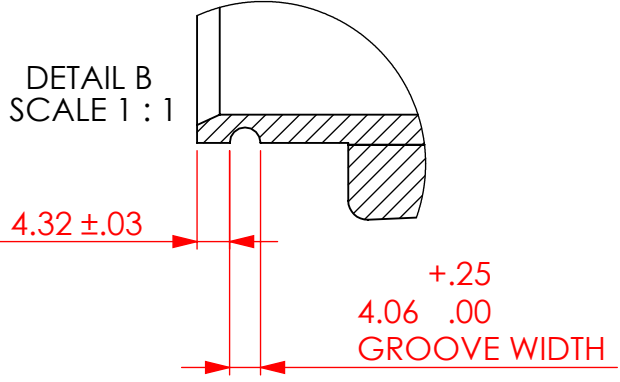
program #	op	machine
.		lathe

REVISIONS				
ZONE	REV.	DESCRIPTION	DATE	APPROVED

CALCULATIONS:
 1) "A" IS CONSTANT
 2) "C"="B"+8



NOTE: DIMENSIONS ARE TYPICAL ON BOTH ENDS OF THE PART. FOR OUT OF ROUND TUBES, ENDS MUST BE BORED TO DIMENSION SHOWN.



- NOTES:**
- BREAK AND DEBURR ALL EDGES .25mm MAX.
 - CLEAN PART FOR USE IN A VACUUM ENVIRONMENT.
 - PACKAGE PART TO PROTECT FROM DAMAGE AND TO ENSURE CLEANLINES.

UNLESS OTHERWISE SPECIFIED:		SPUTTERING COMPONENTS, INC.			
BREAK ALL CORNERS .015 Typ.		375 Alexander Dr. SW, Owatonna, MN 55060			
imperial	metric	CONFIDENTIAL: UNAUTHORIZED USE, MANUFACTURE OR REPRODUCTION IN WHOLE OR IN PART IS PROHIBITED.			
X.0 = ± .030	X.0 = ± 1	PROPRIETARY TO: SPUTTERING COMPONENTS, INC.			
0.X = ± .015	0.X = ± .5	TITLE: SCI METRIC TAPERED TARGET			
0.XX = ± .010	0.XX = ± .25	WEIGHT	SIZE	DATE DRAWN	DWG. NO.
0.XXX = ± .005	0.XXX = ± .125		B	08/14/2013	SCTT-GENERIC
DO NOT SCALE DRAWING		MATERIAL:	FINISH: .	SCALE	REV
				1:2	-01
				SHEET 1 OF 1	