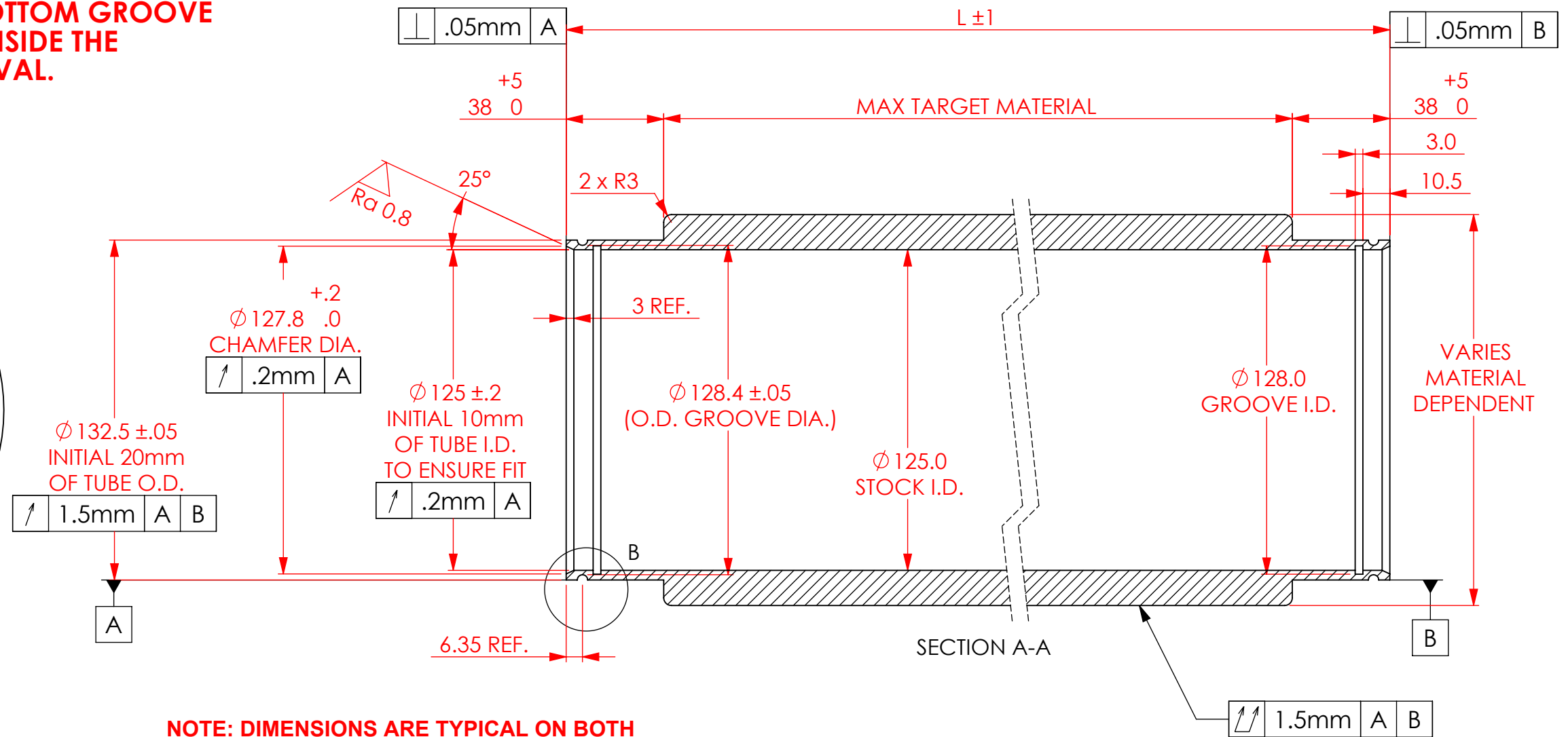
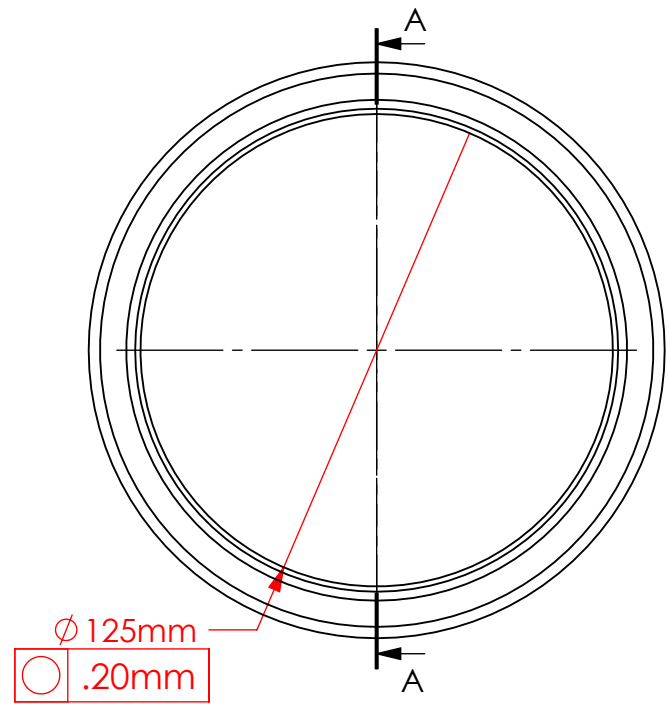
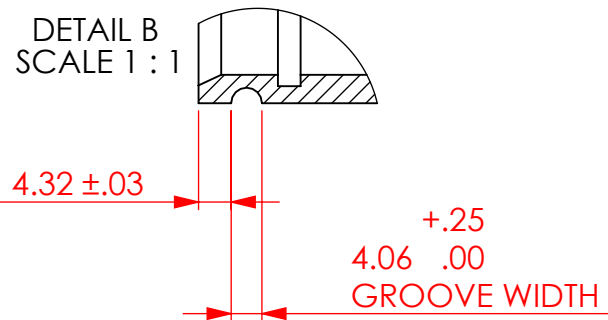


THIS BACKING TUBE IS ONLY NEEDED WHEN VERTICAL TARGET CHANGE IS REQUIRED.

SMALLEY RETAINING RING (WH-493-S0) IS TO BE PLACED INSIDE THE BOTTOM GROOVE TO KEEP THE MAGNET BAR INSIDE THE TARGET TUBE DURING REMOVAL.



NOTE: DIMENSIONS ARE TYPICAL ON BOTH ENDS OF THE PART. FOR OUT OF ROUND TUBES, ENDS MUST BE BORED TO DIMENSION SHOWN.



- NOTES:
- BREAK AND DEBURR ALL EDGES .25mm MAX.
 - CLEAN PART FOR USE IN A VACUUM ENVIRONMENT.
 - PACKAGE PART TO PROTECT FROM DAMAGE AND TO ENSURE CLEANLINESS.

UNLESS OTHERWISE SPECIFIED:		SPUTTERING COMPONENTS, INC. 375 Alexander Dr. SW, Owatonna, MN 55060			
BREAK ALL CORNERS .015 Typ.					
imperial	metric	TITLE: QRM TARGET WITH RETAINER			
X.0 = $\pm .030$	X.0 = ± 1				
0.X = $\pm .015$	0.X = $\pm .5$				
0.XX = $\pm .010$	0.XX = $\pm .25$				
0.XXX = $\pm .005$	0.XXX = $\pm .125$				
WEIGHT	SIZE	DATE DRAWN	PART NO.	SCALE	REV
DRAWN BY	B	1/18/2013	MOD NO. SCQTR	1:2	.
DO NOT SCALE DRAWING	MATERIAL: VARIES		FINISH:	SHEET 1 OF 1	