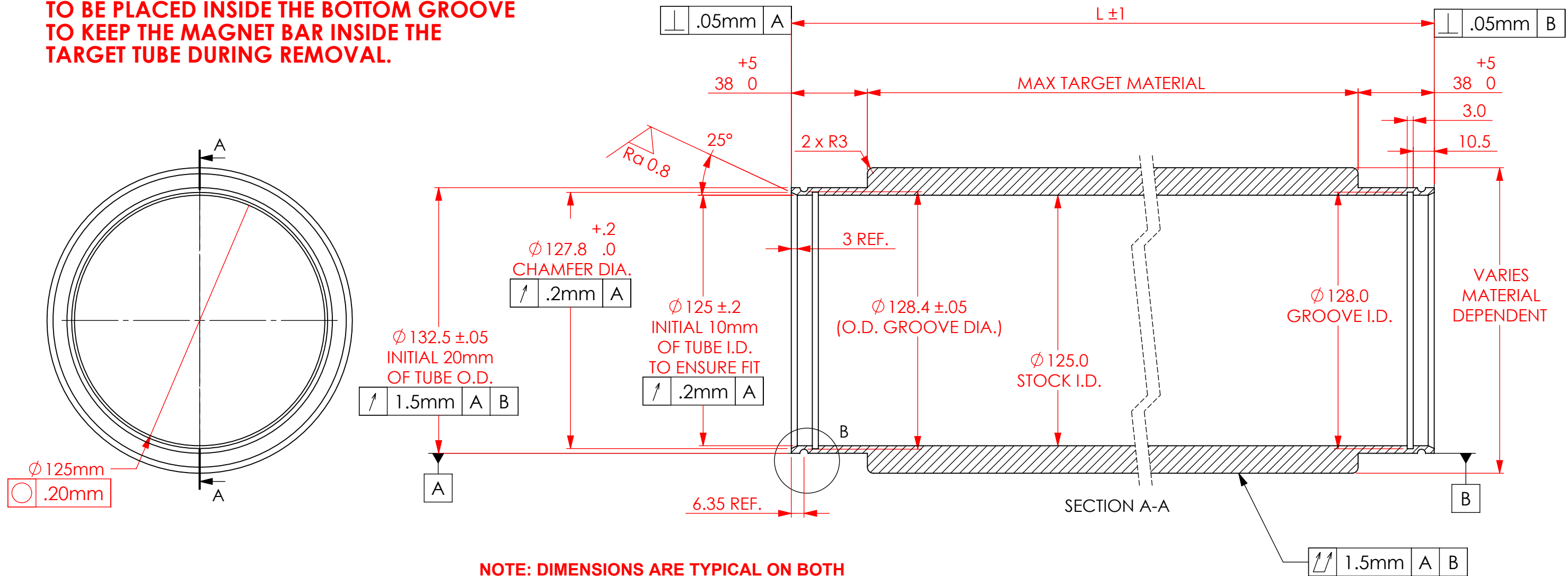


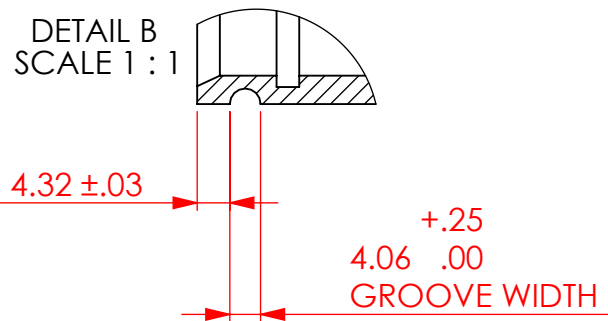
REVISIONS			
REV.	DESCRIPTION	DATE	APPROVED
A	ADDED NOTE	3/2/2016	DC/MN

**THIS BACKING TUBE IS ONLY NEEDED WHEN VERTICAL TARGET CHANGE IS REQUIRED.**

**SMALLEY RETAINING RING (WH-493-S0) IS TO BE PLACED INSIDE THE BOTTOM GROOVE TO KEEP THE MAGNET BAR INSIDE THE TARGET TUBE DURING REMOVAL.**



**NOTE: DIMENSIONS ARE TYPICAL ON BOTH ENDS OF THE PART. FOR OUT OF ROUND TUBES, ENDS MUST BE BORED TO DIMENSION SHOWN.**



- NOTES:
- BREAK AND DEBURR ALL EDGES .25mm MAX.
  - CLEAN PART FOR USE IN A VACUUM ENVIRONMENT.
  - PACKAGE PART TO PROTECT FROM DAMAGE AND TO ENSURE CLEANLINESS.

**4. THIS MONOLITHIC TARGET DESIGN MAY NOT SUPPORT ALL TARGET MATERIALS. CONSULT SCI WITH ANY QUESTIONS.**

UNLESS OTHERWISE SPECIFIED:	
BREAK ALL CORNERS .015 Typ.	
imperial	metric
X.0 = ± .030	X.0 = ± 1
0.X = ± .015	0.X = ± .5
0.XX = ± .010	0.XX = ± .25
0.XXX = ± .005	0.XXX = ± .125

**SPUTTERING COMPONENTS, INC.**  
375 Alexander Dr. SW, Owatonna, MN 55060

TITLE: **QRM TARGET WITH RETAINER**

WEIGHT	SIZE <b>B</b>	DATE DRAWN 01/18/2013	PART NO. SCQTR	SCALE 1:2	REV A
DRAWN BY	MATERIAL: VARIES		MOD NO.	FINISH:	
DO NOT SCALE DRAWING				SHEET 1 OF 1	