

## Internal-Mount End Block cMC-Series

The cMC is designed to directly replace the Soleras compact end block or to use in new systems.

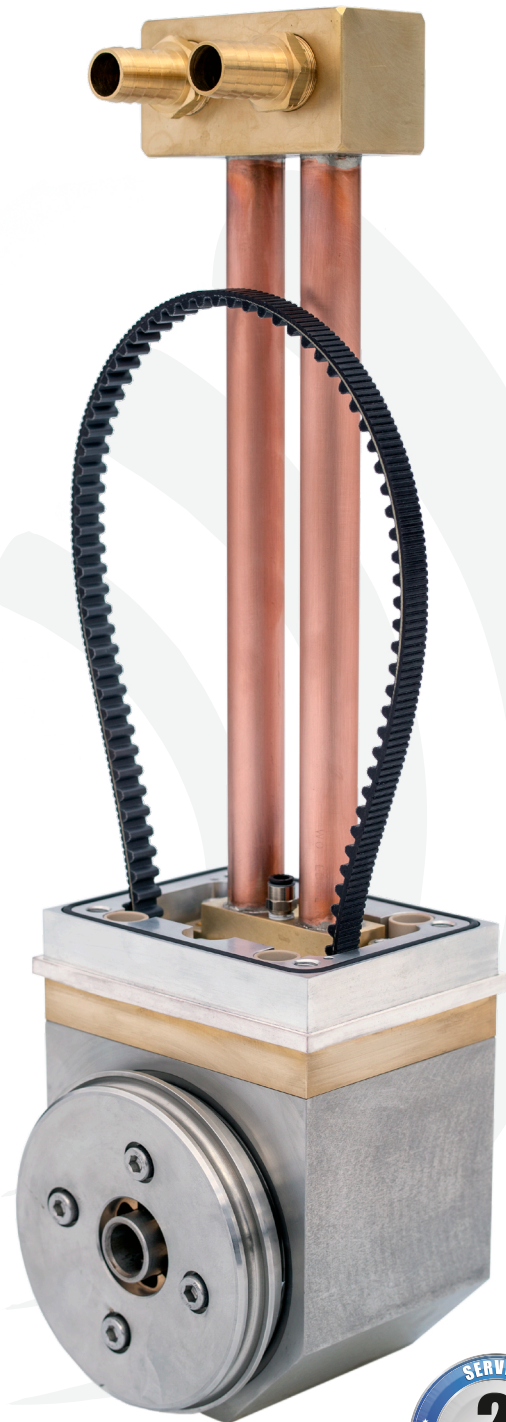
The cMC has a simple, singled-ended, belt-driven design with brushless power transfer and an outboard support for quick target changes, high reliability and easy, do-it-yourself maintenance.

Upgrade from planar systems to increase the output and quality of your existing coater.

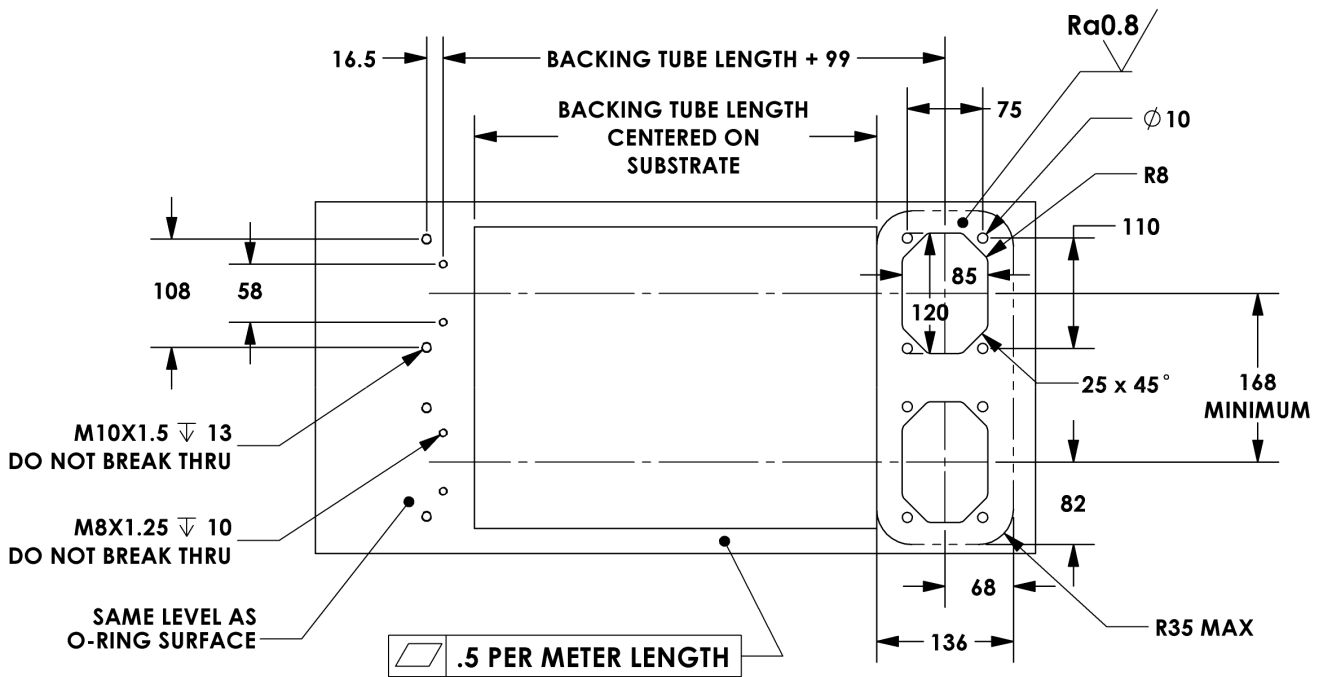
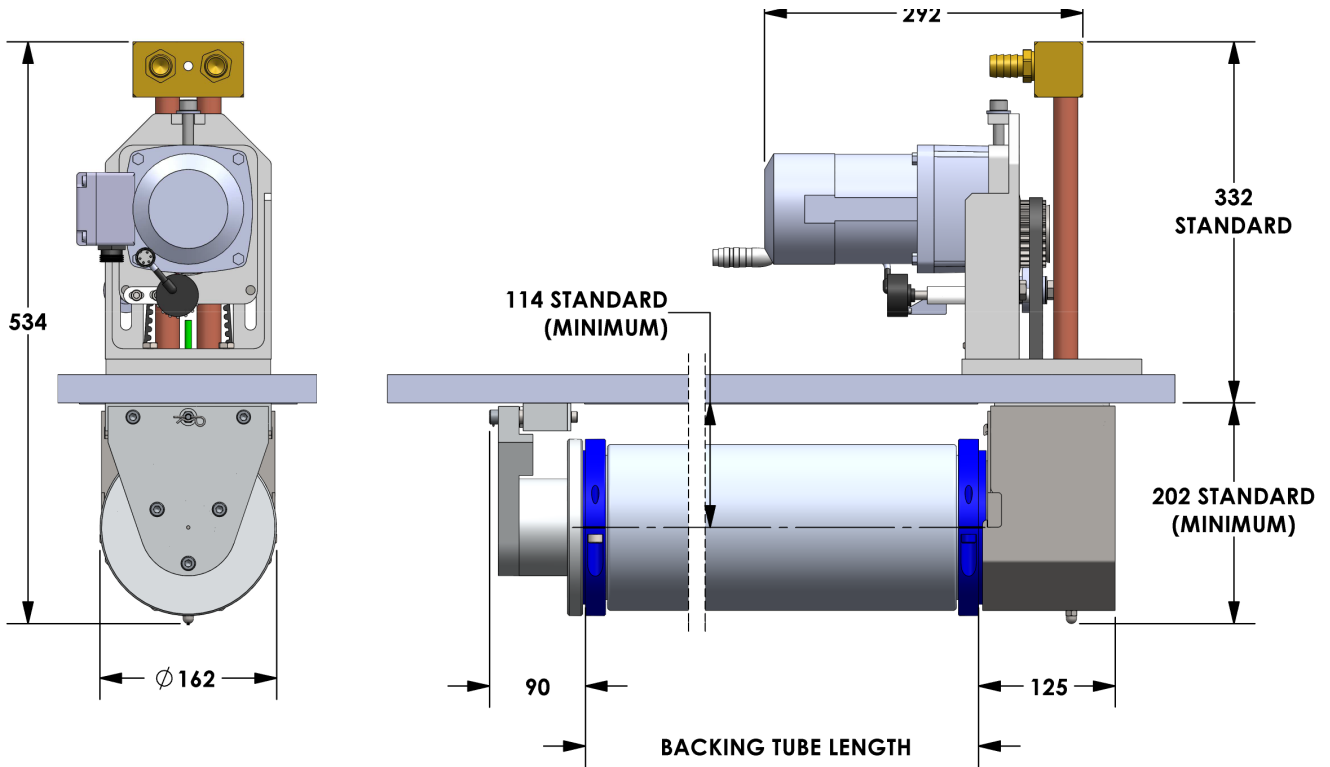
SCI can provide coater integration support.

### TECHNICAL SPECIFICATIONS

- |                              |  |
|------------------------------|--|
| <b>Electrical rating</b>     | ▶ 80 kW<br>1500 V, 180 A<br>(DC or 80 kHz AC)  |
| <b>Mounting</b>              | ▶ Any orientation  |
| <b>Targets</b>               | ▶ 125 mm ID<br>2000 mm max. length   |
| <b>Maximum load</b>          | ▶ 1000 kg horizontal<br>200 kg vertical  |
| <b>Vacuum seal leak rate</b> | ▶ $<3 \times 10^{-7}$ mbar·L/s   |
| <b>Maintenance (typical)</b> | ▶ Seal kit and bushings every 2 years (1 hr);<br>Static seals, bearings and belt after 10 years (3 hr) |



**SPUTTERING**  
COMPONENTS®



**TOLERANCES**  
 XXXmm =  $\pm 1.0$ mm  
 XXX.Xmm =  $\pm 0.1$ mm

Dimensions in mm